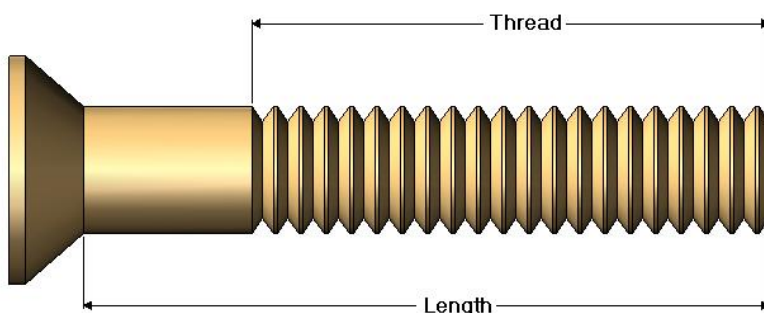
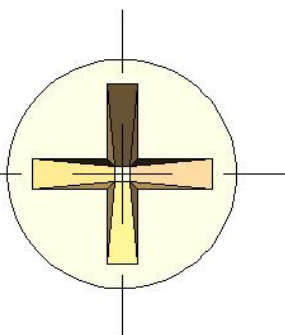
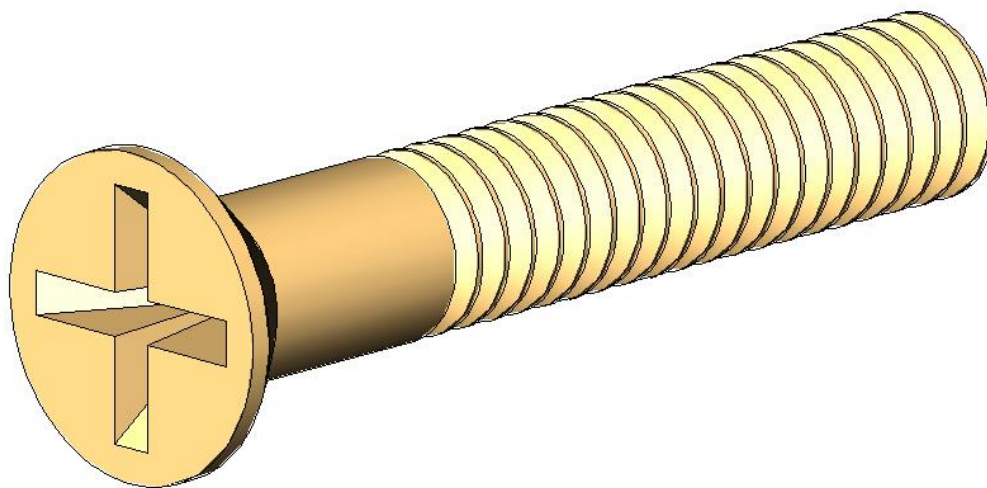


Flat Head Machine Screw - Selection



5/16-18 Flat Head Machine Screw		
CSF P/N#	Length	Thread
FH0901	1/2"	Full
FH0902	5/8"	Full
FH0903	3/4"	Full
FH0904	7/8"	Full
FH0905	1.00"	Full
FH0906	1.25"	Full
FH0907	1.50"	Full
FH0908	1.75"	Full
FH0909	2.00"	Full
FH0910	2.50"	1.75"
FH0911	3.00"	1.75"

1/4-20 Flat Head Machine Screw		
CSF P/N#	Length	Thread
FH0701	7/16"	Full
FH0702	1/2"	Full
FH0703	5/8"	Full
FH0704	3/4"	Full
FH0705	7/8"	Full
FH0706	1.00"	Full
FH0707	1.12"	Full
FH0708	1.25"	Full
FH0709	1.50"	Full
FH0710	1.75"	Full
FH0711	2.00"	Full

1/4-20 Flat Head Machine Screw		
CSF P/N#	Length	Thread
FH0712	2.25"	1.75"
FH0713	2.50"	1.75"
FH0714	2.75"	1.75"
FH0715	3.00"	1.75"

Notes:
 - Flat Head M/S Selection finish is zinc yellow.

Specifications subject to change. Please contact CSF Customer Service for more information.